

Centres

Centres

Centres

# NZ Playcentre Federation Structure

Centres

Centres

Centres

Associations

Associations

Associations

Associations

Associations

Maori Caucus Administrator

National Executive

Tangata Whenua Caucus

Tangata Tiriti Caucus

Tangata Whenua Federation Officers

Tangata Tiriti Federation Officers

Association Support Team

Trustee Board

Education Team

Volunteers

Employees

Property Funds Manager

Operations Manager

Training Co-Ordinator

Secretary

Professional Development Contract Co-Directors

Book-keeper

Tertiary Education Funding Manager

Professional Development Facilitators



Centres

Centres

Centres

# NZ Playcentre Federation Structure

Centres

Centres

Centres

Associations

Associations

Associations

Associations

Associations

National Executive

Tangata Whenua  
Caucus

Tangata Tiriti  
Caucus

Association Support  
Team

Trustee Board

Education Team

Property Funds  
Manager

Operations  
Manager

Training  
Co-Ordinator

Maori Caucus  
Administrator

Secretary

Professional  
Development  
Contract Co-Directors

Book-keeper

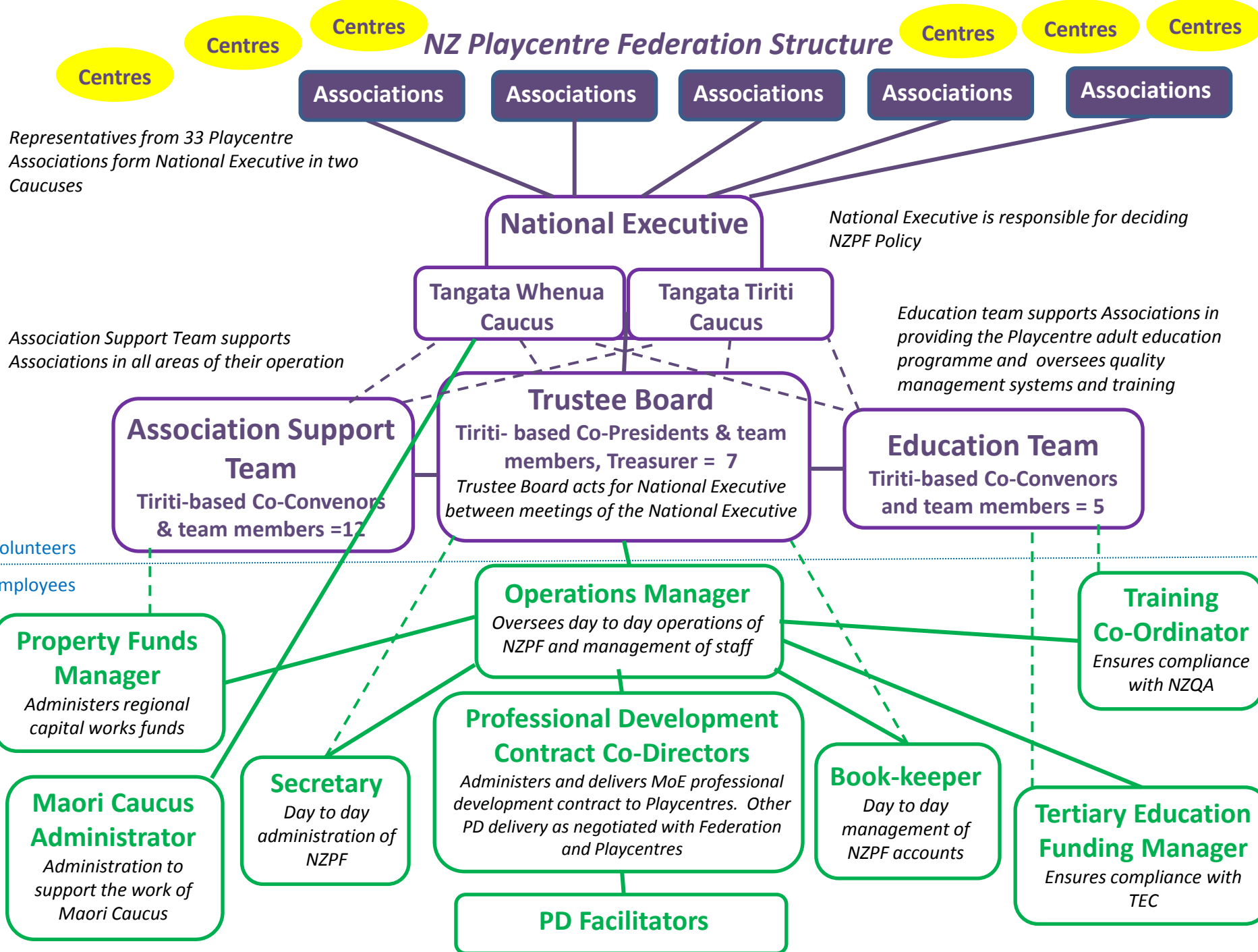
Tertiary Education  
Funding Manager

Professional  
Development Facilitators

Volunteers  
Employees



# NZ Playcentre Federation Structure



Centres

Centres

Centres

Centres

Centres

Centres

Associations

Associations

Associations

Associations

Associations

Representatives from 33 Playcentre Associations form National Executive in two Caucuses

**National Executive**

National Executive is responsible for deciding NZPF Policy

**Tangata Whenua Caucus**

**Tangata Tiriti Caucus**

Association Support Team supports Associations in all areas of their operation

Education team supports Associations in providing the Playcentre adult education programme and oversees quality management systems and training

**Association Support Team**  
Tiriti-based Co-Convenors & team members =12

**Trustee Board**  
Tiriti- based Co-Presidents & team members, Treasurer = 7  
Trustee Board acts for National Executive between meetings of the National Executive

**Education Team**  
Tiriti-based Co-Convenors and team members = 5

Volunteers

Employees

**Property Funds Manager**

Administers regional capital works funds

**Operations Manager**

Oversees day to day operations of NZPF and management of staff

**Training Co-Ordinator**

Ensures compliance with NZQA

**Maori Caucus Administrator**

Administration to support the work of Maori Caucus

**Secretary**

Day to day administration of NZPF

**Professional Development Contract Co-Directors**

Administers and delivers MoE professional development contract to Playcentres. Other PD delivery as negotiated with Federation and Playcentres

**Book-keeper**

Day to day management of NZPF accounts

**Tertiary Education Funding Manager**

Ensures compliance with TEC

**PD Facilitators**